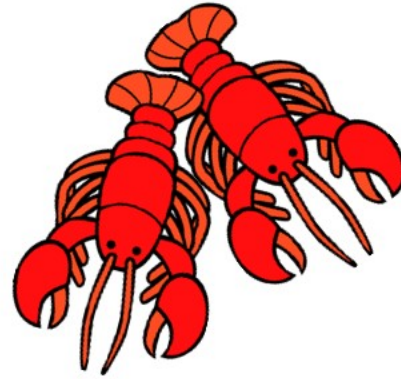


All about New Brunswick



a nonfiction reader
by SpecEd Specialties, ©2019



Where is New Brunswick?



New Brunswick is in Atlantic Canada. *Quebec* is to the north. The state of *Maine* in the United States of America is to the west. The *Bay of Fundy* and *Nova Scotia* are to the southeast. New Brunswick was one of the 4 provinces to first form Canada in 1867.

What does New Brunswick's flag look like?



New Brunswick's flag has a gold lion on a red background at the top.
It has a boat sailing on blue waves.

Who lives in New Brunswick?



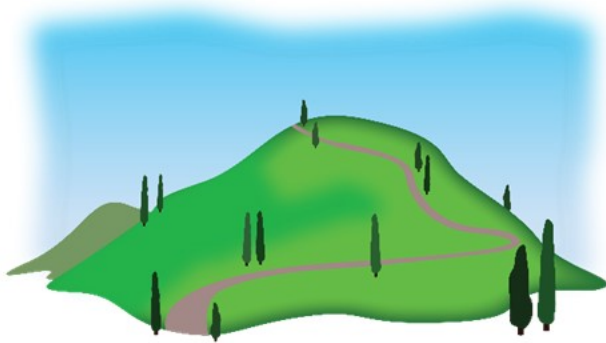
About 800 000 people live in New Brunswick. Fredericton is New Brunswick's capital city. New Brunswick's official languages are French and English. New Brunswick is the only official bilingual province. The Acadian people are the French people in New Brunswick.

What's the weather like in New Brunswick?



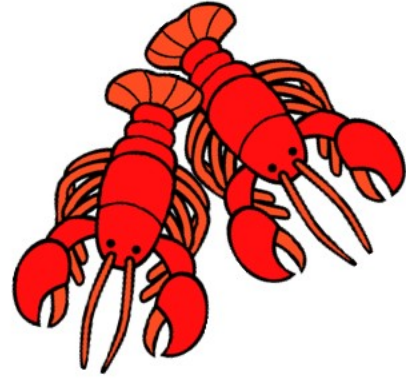
The weather is very different in different parts of New Brunswick. Northern New Brunswick has cold winters and warm summers. Places near the Bay of Fundy have mild winters and cooler, foggy summers.

What's the land like in New Brunswick?



Most of New Brunswick is surrounded by water. There are many coastal areas near the Bay of Fundy, the Gulf of St. Lawrence, and the Atlantic Ocean. The Appalachian Mountains are old mountains in western New Brunswick.

What are New Brunswick's natural resources?



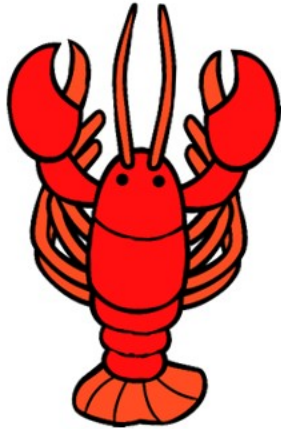
Most of New Brunswick is covered in forests. The trees are used to make paper and wood. There are many fish and shellfish, especially lobster.

What plants and animals live in New Brunswick?



The black-capped chickadee is New Brunswick's official bird. Moose, bald eagles, bobcats, red foxes, and black bears also live in New Brunswick. Many whales and dolphins live in the Bay of Fundy. The purple violet is New Brunswick's official flower.

What else is special about New Brunswick?



The Bay of Fundy has the world's highest tides. The world's largest lobster is a sculpture in Shediac, New Brunswick. The longest covered bridge in the world is in Hartland, New Brunswick.

Quick Facts about New Brunswick

Joined Canada: 1867

Population: about 800 000 people

Official Language: English and French

Capital City: Fredericton

Climate: cold winters and warm summers in the north; mild winters and cool, foggy summers near the Bay of Fundy

Landforms: Appalachian mountains, coastal areas

Natural Resources: forests, seafood